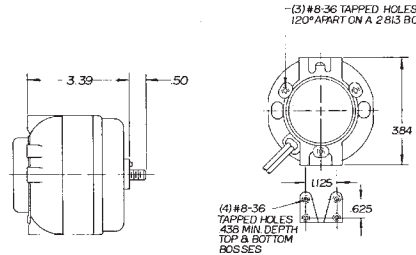


Manufactured by Electric Motors & Specialties 

16-25-35 WATT (1/50 to 1/20 HP)

Features:

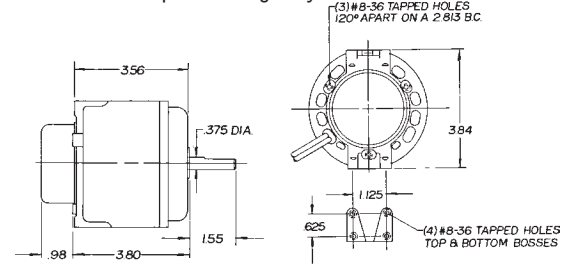
- High Efficiency
- Cast Iron
- Fan Motors
- Horizontal and Shaft Up mounting only



50-75 WATT (1/15 HP)

Features:

- High Efficiency
- Cast Iron
- Fan Motors
- Horizontal and Shaft Up mounting only



| Watt Output | RPM | Volts | Amps | Stock Number | Alternate Stock No. | Shaft Diameter & Length | Rotation | EMS Number | OEM Part Number | Notes |
|-------------|------|---------|------|--------------|---------------------|-------------------------|----------|----------------|------------------|---------|
| 15 | 1500 | 115 | .60 | 277 | | 5/16 x 7 | CCWLE | ESPOL15EMJR11 | 24-0366 | 3 |
| 15 | 1500 | 115 | .60 | 292 | | 5/16 x 5 | CCWLE | ESP-L15EMJR1B2 | | |
| 15 | 1500 | 115 | .60 | 293 | | 5/16 x 7THD | CCWLE | ESP-L15EMJR1B1 | | 3,6 |
| 15 | 1500 | 115 | .60 | 294 | | 5/16 x 5THD | CCWLE | ESP-L15EMJR1 | | 1,3 |
| 15 | 1500 | 115 | .60 | 295 | | 5/16 x 7 | CCWLE | ESP-L15EMJR1B3 | | |
| 15 | 1500 | 115 | .60 | 296 | | 5/16 x 9 | CCWLE | ESP-L15EMJR17 | | 69 |
| 16 | 1500 | 115 | .80 | 246 | | 1/4 x 20THD | CWLE | ESPL16EM1 | | |
| 16 | 1500 | 115 | .80 | 247 | | 1/4 x 20THD | CCWLE | ESPL16EMR1 | | 185 |
| 16 | 1500 | 230 | .40 | 248 | UB16CWH | 1/4 x 20THD | CWLE | ESPL16EM2 | | 185 |
| 16 | 1500 | 230 | .40 | 249 | | 1/4 x 20THD | CCWLE | ESPL16EMR2 | | 185 |
| 25 | 1500 | 115 | 1.1 | 297 | | 5/16 x 7 | CCWLE | ESPL25MJR1B1 | | 3,69 |
| 25 | 1500 | 115 | 1.1 | 299 | | 8-1/8 x 5/16 x 1/2 | CCWLE | ESPOL25MVRD12 | | 1 |
| 25 | 1500 | 115 | 1.1 | 250 | | 1/4 x 20THD | CWLE | ESPL25EM1 | | |
| 25 | 1500 | 115 | 1.1 | 251 | UB25CCL | 1/4 x 20THD | CCWLE | ESPL25EMR1 | | 185 |
| 25 | 1500 | 230 | .60 | 252 | | 1/4 x 20THD | CWLE | ESPL25EM2 | | 185 |
| 25 | 1500 | 230 | .60 | 253 | | 1/4 x 20THD | CCWLE | ESPL25EMR2 | | |
| 35 | 1500 | 115 | 1.4 | 254 | | 1/4 x 20THD | CWLE | ESPL35EM1 | 810M035A29 | |
| 35 | 1500 | 115 | 1.4 | 255 | | 1/4 x 20THD | CCWLE | ESPL35EMR1 | | |
| 35 | 1500 | 230 | .70 | 256 | | 1/4 x 20THD | CWLE | ESPL35EM2 | 810M035A21 & A28 | |
| 35 | 1500 | 230 | .70 | 257 | | 1/4 x 20THD | CCWLE | ESPL35EMR2 | | |
| 50 | 1500 | 115 | 1.7 | 258 | | 3/8 x 1-1/2 | CWLE | ESPOL50EM1 | 050-0244-01 | |
| 50 | 1500 | 115 | 1.7 | 291 | | 5/16 x 3 | CWLE | ESPOL50EM1B1 | 134350000 | 3 |
| 50 | 1500 | 115 | 1.7 | 259 | | 3/8 x 1-1/2 | CCWLE | ESPOL50EMR1 | | 3,6,185 |
| 50 | 1500 | 115 | 1.7 | 289 | | 3/8 x 1-1/2 | CWLE | ESPOL50EM13 | 998-1008-00 | 3,187 |
| 50 | 1500 | 230 | .85 | 260 | | 3/8 x 1-1/2 | CWLE | ESPOL50EM2 | 050-0244-00 | 6 |
| 50 | 1500 | 208-230 | 1.2 | 9200 | | 3/8 x 1-1/4 | CWLE | ESPOL60EM2 | | |
| 50 | 1500 | 230 | .85 | 261 | | 3/8 x 1-1/2 | CCWLE | ESPOL50EMR2 | | 3,6,185 |
| 50 | 1500 | 230 | .85 | 276 | | 5/16 x 2-1/2 | CCWLE | ESPOL50EMJR21 | 810M050A62 | 3 |
| 50 | 1500 | 230 | .85 | 285 | | 5/16 x 1-1/2 | CWLE | ESPOL50EM2B | | 3 |
| 50 | 1500 | 230 | .85 | 288 | | 3/8 x 1-1/2 | CWLE | ESPOL50EM26 | 998-1007-00 | 3,187 |
| 50 | 1500 | 460 | .44 | 290 | | 3/8 x 1-1/2 | CWLE | ESPOL50EM461 | 050-0244-02 | 3 |
| 75 | 1500 | 230 | 1.5 | 298 | | 3/8 x 1-1/2 | CWLE | ESPOL75EM2 | | |

Notes:

- Item to be discontinued when stock is depleted
- Special OEM Replacement Motor (See Page 16-18)
- 60/50 HZ
- Pin Hole
- Items with Alternate and A. O. Smith stock numbers and same specifications are identical. The A. O. Smith stock number will be discontinued when stock is depleted.
- Includes Mounting Bracket and Shaft Bushing
- See Parts & Accessories starting on page 258